



12 Crownfield Road

Ashford, TN23 5ED

Price £250,000

Currently arranged as an HMO to be sold with tenants in residence.

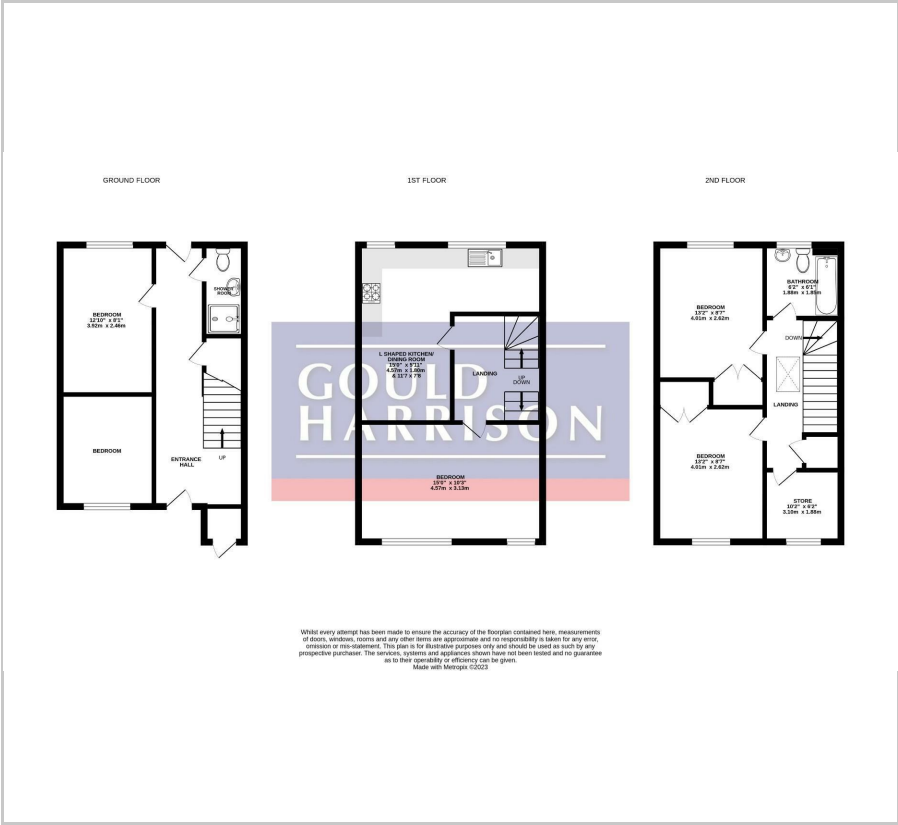
This spacious property is arranged over three floors and comprises an entrance hall, kitchen/living space, five bedrooms, shower room/WC and bathroom/WC. The rear garden is pleasantly enclosed with the property also offering a driveway for off road parking, gas central heating and double glazing.

Viewing

Please contact our Ashford Office on 01233 646411 if you wish to arrange a viewing appointment for this property or require further information.

- SPACIOUS TOWNHOUSE
- CURRENTLY ARRANGED AS AN HMO
- FIVE BEDROOMS
- KITCHEN/LIVING SPACE
- SHOWER ROOM & BATHROOM/WC
- GAS CENTRAL HEATING
- DOUBLE GLAZING
- DRIVEWAY
- EPC RATING - C (70)

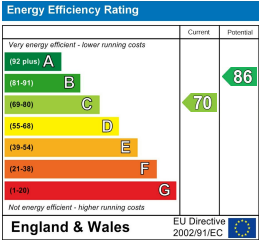
Floor Plan



Area Map



Energy Efficiency Graph



These particulars, whilst believed to be accurate are set out as a general outline only for guidance and do not constitute any part of an offer or contract. Intending purchasers should not rely on them as statements of representation of fact, but must satisfy themselves by inspection or otherwise as to their accuracy. No person in this firm's employment has the authority to make or give any representation or warranty in respect of the property.